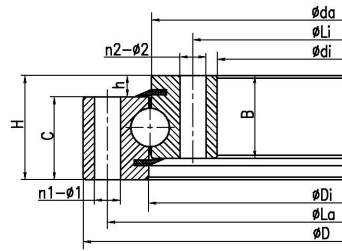


# Four-point Contact Ball Slewing Bearing Without Teeth



Bearing No.	INA No.	Rothe Erde No.	LYC No.	TG No.	Dimensions(mm)				Installation size(mm)				Structure size(mm)				Tooth parameter(mm)				Rated axial static load (KN)	Weight(kg)				
					Da	D	d <sub>i</sub>	H	La	Li	n1	n2	φ1	φ2	D1	d	b	h	B	C			D <sub>i</sub>	Da	m	z
SR11/170					170	70	40	148	90	6	6	φ9	M8			5	35	35	121.5	118.5					4.37	
SR10/179					234	124.5	25	214	144.5	24	19	φ11	φ11			5	25	25	180	178					140	5.4
SR15/179	VU 140179				234	124.5	35	214	144.5	12	12	11	11			5	30	30	178	180					220	7
SR15/179Y					234	124.5	35	214	144.5	24	20	φ11	φ11			5	30	30	180.5	177.5					200	7
SR20/300				E.318.22.00.D.1	300	138	46	270	170	6	6	φ13.5	φ13.5			5	41	41	220	218					350	14.34
SR20/220	VU 200220			E.318.22.00.D.1	302	138	46	270	170	10	10	18	18			5	41	41	219	221					420	16
SR20/220Y	VU200220			E.318.15.01.AALM	302	140	46	270	170	10	10	φ18	M16			5	41	41	223	221					435	18.5
SR20/312					312	145.14	50	270	175	14	16	M15.88	M15.88			6	44	44	220.86	224.15					350	18.55
SR15/200					240	160	38									5	33	33	201	199					300	6.3
SR20/260Y					329	190	45	305	215	16	16	φ14	φ14	328	192	1	44	44	261.5	258.5					520	15.8
SR20/257					329	190	45	305	215	16	16	φ14	φ14	328	192	1	44	44	258	256					480	16.2
SR20/326A					326	191	46	305	215	8	8	M8	M8			5	41	41	261	259					280	16.3
SR20/326					326	191	46	305	215	20	20	φ14	φ14			5	41	41	261	259					280	15.1
SR20/257A					329	191	45	305	215	20	20	φ14	φ14	327	193	4	41	41	258	256					480	15
SR20/260	VU.200.260			E.403.22.05.AALM	329	191	46	305	215	20	20	φ14	φ14		193	5	41	41	263	261					420	14.8
SR20/260Y1	VU 200260			E.403.22.01.CC.LM	326	191	46	305	215	20	20	14	14			5	41	41	259	261					500	15
SR20/260Y2				E.403.22.51.CC.LM	328	192	45	305	215	16	16	φ14	φ14	328	192		45	45	262	258					540	18
SR10/250				E.403.22.00.D1	300	200	35	280	220	16	16	M10	M10		200	5	30	30	251	249					200	7.1
SR30/435A					435	228	78	394.5	277	8	4	42006	42006			18	60	65	335	332					830	49.6
SR20/308					403.5	235	55	358	259	14	12	φ13	φ13	380		8	45	47	310.5	306.5					550	26.6
SR20/341			LY-Q020	E.403.22.00.D.1	440	240	55	400	280	18	18	M20-7H	22			5	50	50	342	340					782	34.7
SR25/345					430	260	65	400	290	24	24	φ14	φ16			12	53	53	348	342					820	32
SR 15/325	VU 140325				380	270	35	360	290	24	24	11	11			5	30	30	324	326					460	12
SR25/485				E.403.22.00.D.1	485	275	55	453	307	8	8	M16	M16			5	50	50	382	378					1010	45.4
SR25/485Y					485	275	55	453	307	8	8	φ18	φ18			5	50	50	382	378					1010	45.4
SR 25/380	VU 250380				485	275	55	453	307	16	16	18	18			5	50	50	379	381					840	45
SR20/383			LY-Q007		485	275	55	453	307	16	16	18	M16			5	50	50	386	381					872	43.7
SR20/383Y			LY-Q007K		485	275	55	453	307	16	16	18	18			5	50	50	386	381					872	43.7
SR17/402				E.535.25.00.D.1	402	278	44	383	298	12	12	φ9	M8			6	38	38	342	338					470	17.3
SR20/370		060.22.0370.301.11.1504			456	289	59	425	320	16	16	M16	M16			9	50	50	369	371					940	35