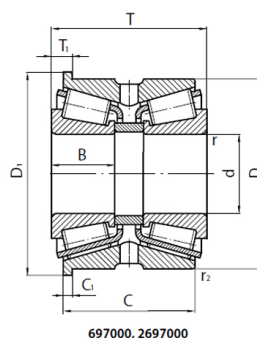


Double-row taper roller bearings with flanged outer ring



697000, 2697000

Bearing designation	Dimensions(mm)										Load factor			Load ratings(N)		Limiting rotational speed. min-1		Mass(kg)	
	d	D	D1	T	T1	B	C	C1	rmin	r2min	e	Y1	Y2	Y0	Cr	Cor	Grease		Oil
2697709A	45	75	81	77.588	9	20	69	4.95	1	0.3	0.39	1.72	2.56	1.68	107000	177000		5000	1.078
697510AШ2	50	90	100	54.625	10.8	23	45	6	1.5	0.5	0.42	1.6	2.39	1.57	157000	232000		5600	1.432
697810ЛК**	50*	90*	94.76	64	11.11	29	51.3	4.76	2	0.3	0.3	2.23	3.32	2.18	125000	168000		3200	1.643
697711ЛКУ**	55*	100*	104.5	65	10	29.5	54	4.5	2	0.3	0.34	2	2.99	1.96	152000	224000		3200	2.05
697712Л**	60	100	104.5	58	10	26.5	47	4.7	1.3	0.3	0.35	1.95	2.9	1.9	138000	200000		3200	1.69
697814Л**	70	120	125.55	71.24	11.11	32	59.88	5.55	1.8	0.5	0.3	2.23	3.32	2.18	200000	315000		3200	3.612
697815Л**	75	130	136	79	12	37	66	5.5	1.8	0.5	0.22	3.07	4.57	3	268000	412000		2400	4.015
697716Л**	80	140	147	85	13.93	38.5	69.14	6.2	2.3	0.5	0.24	2.76	4.11	2.7	268000	434000		2800	5.11
697817Л**	85	140	146.34	85	14.28	38.5	69.14	6.35	2.3	0.5	0.24	2.76	4.11	2.7	268000	434000		2700	4.725
697920Л1У**	98.425	152.4	159.34	92	15	42	76	7.3	0.7	0.5	0.25	2.71	4.04	2.65	327000	545000		2400	5.49
697724Л1**	120	180	188	96.8	15.15	44	80.5	7	2.5	0.6	0.3	2.28	3.39	2.23	364000	668000		2000	8
697824Л**	120	190	198	108	17.6	50	88.8	8	2.5	0.6	0.27	2.54	3.74	2.45	450000	807000		2000	10.5
697924У**	120	200	208	84.05	19.86	38	64	10	2.3	0.3	0.46	1.47	2.19	1.44	417000	815000		2000	10.044
697725Л**	127*	215.9*	224	110	17	47	92	8	2.5	1	0.22	3.07	4.57	3	490000	926000		1800	14.3
697927Л**	133.35*	196.85*	204	92	18	38	76	10	2.5	0.6	0.33	2.04	3.04	1.99	261000	574000		1800	8.393
697828Л**	140	190	198	87	12.7	38	73	5.9	2	0.5	0.33	2.04	3.04	2	261000	574000		2000	6.88
697928Л1**	140	210	218	100	15	46	84	7	2.3	0.7	0.22	3.07	4.57	3	489000	923000		2000	11.25
697732Л**	160	240	248	110	17	50	92	8	2.5	0.9	0.25	2.69	4	2.63	544000	1110000		1600	16.4
697737Л**	185	235	243	85	14	37	70	6.55	2	0.5	0.22	3.11	4.64	3.04	337000	725000		1600	7.92
697837Л	185	240	248	84.9	14	37	70	6.55	2	0.5	0.22	3.11	4.64	3.04	338000	727000		1200	8.684
697838Л**	190	290	304	130	23	52	108	12	2.5	0.9	0.38	1.78	2.65	1.74	697000	1310000		1300	28.04
697847Л	234.95*	327.025*	336.55	122	25.4	61	90.24	9.52	6	1.5	0.33	2.03	3.02	1.98	720000	1700000		1500	28.690
697848ЛУ**	240	320	334	128.8	19.5	56	107	9	3	0.5	0.33	2.03	3.02	1.98	721000	1740000		1000	26.95